



PORTFOLIO

2021

Robert Ungar

architecture + urban + landscape

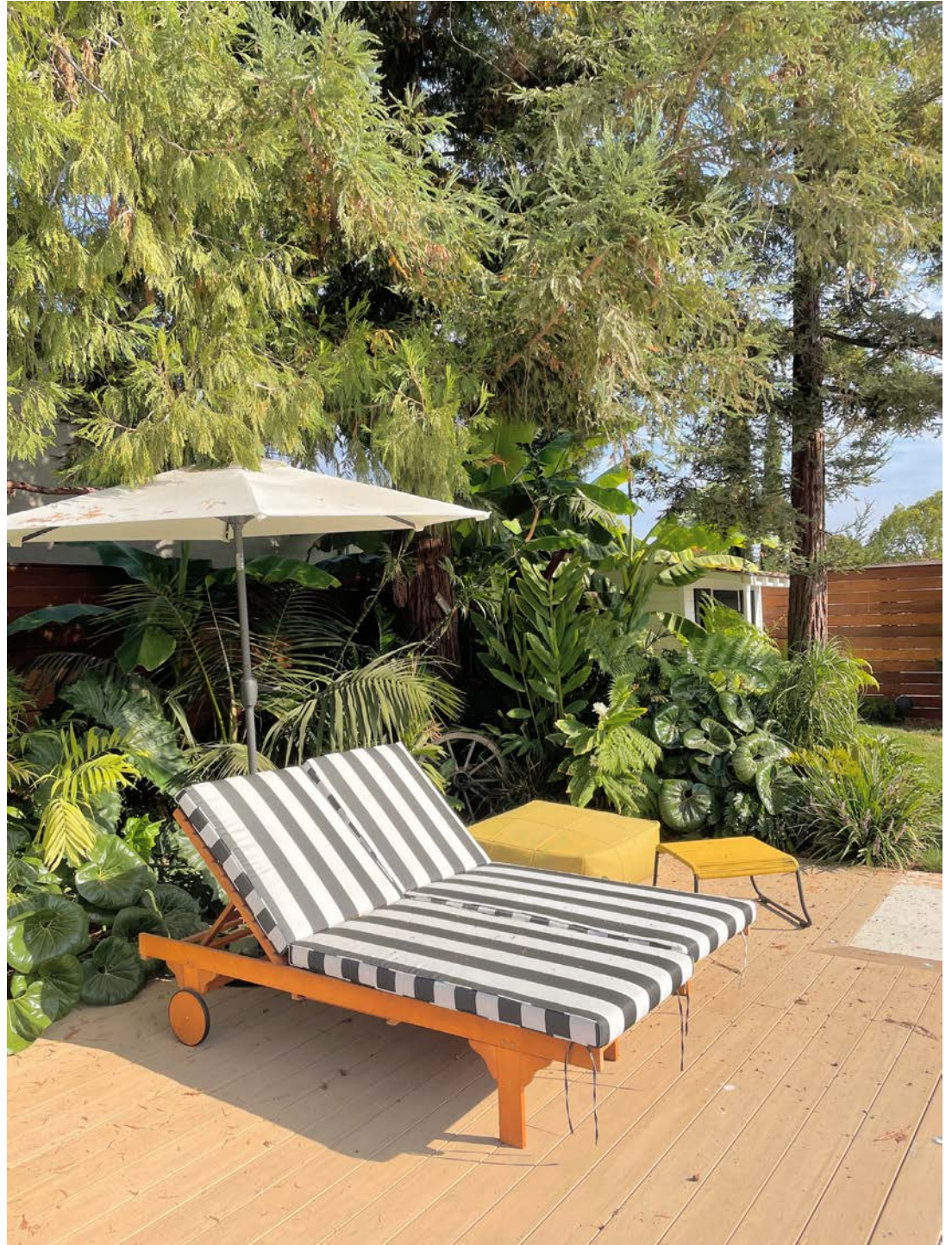
POOLSIDE TROPICAL VIBES IN SUNNY CALIFORNIA

Tropical understory complementing old conifer trees alongside multiple spaces for cooking, dining and lounging. Plant variety focused on large foliage, a tropical look which grows well in the moderate climate of San Francisco Bay Peninsula.

Private client.

2021. Completed

The client defined their wishes well: "We host up to 40-50 people and like to have several areas for people to hang out. **SOCIAL SPACES** surrounded with full, green foliage is how we envision our backyard"



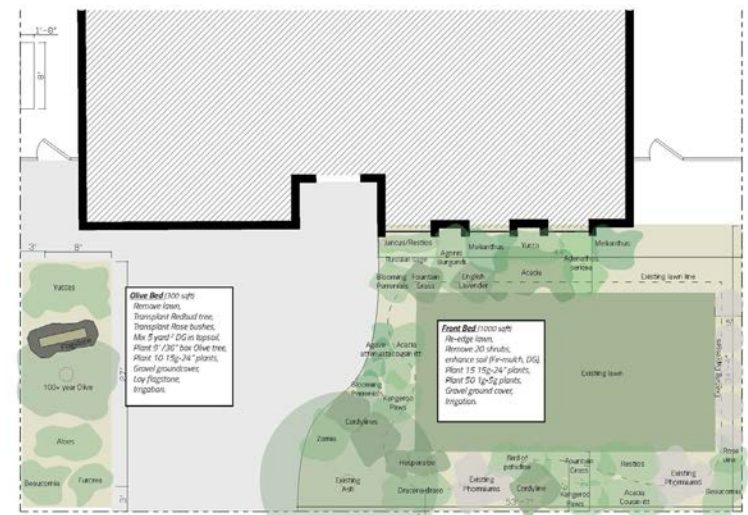


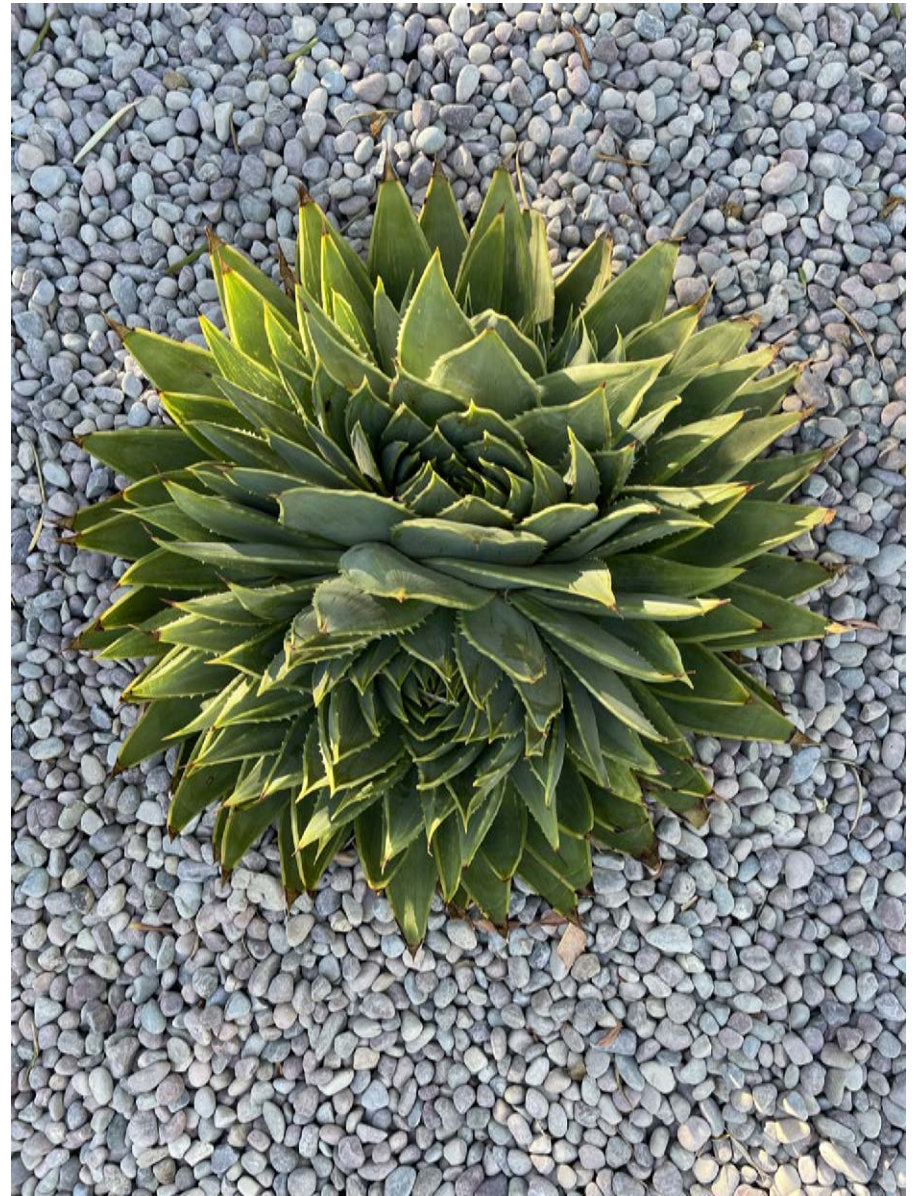
BOLD DRY LANDSCAPE IN LOS ALTOS YARD

Modernizing a front yard to introduce drought-tolerant landscape with low maintenance and low water needs. A 100-year Manzanillo olive tree sets the tone, along with specimen Aloes and Australian Acacia and Agonis trees.

Private client.

2021. Completed





COROKIA COTONEASTER

New Zealand native, low irrigation plant with unique Zig-Zag architecture.

SPACE FOR FAMILY LIFE IN SILICON VALLEY BACKYARD

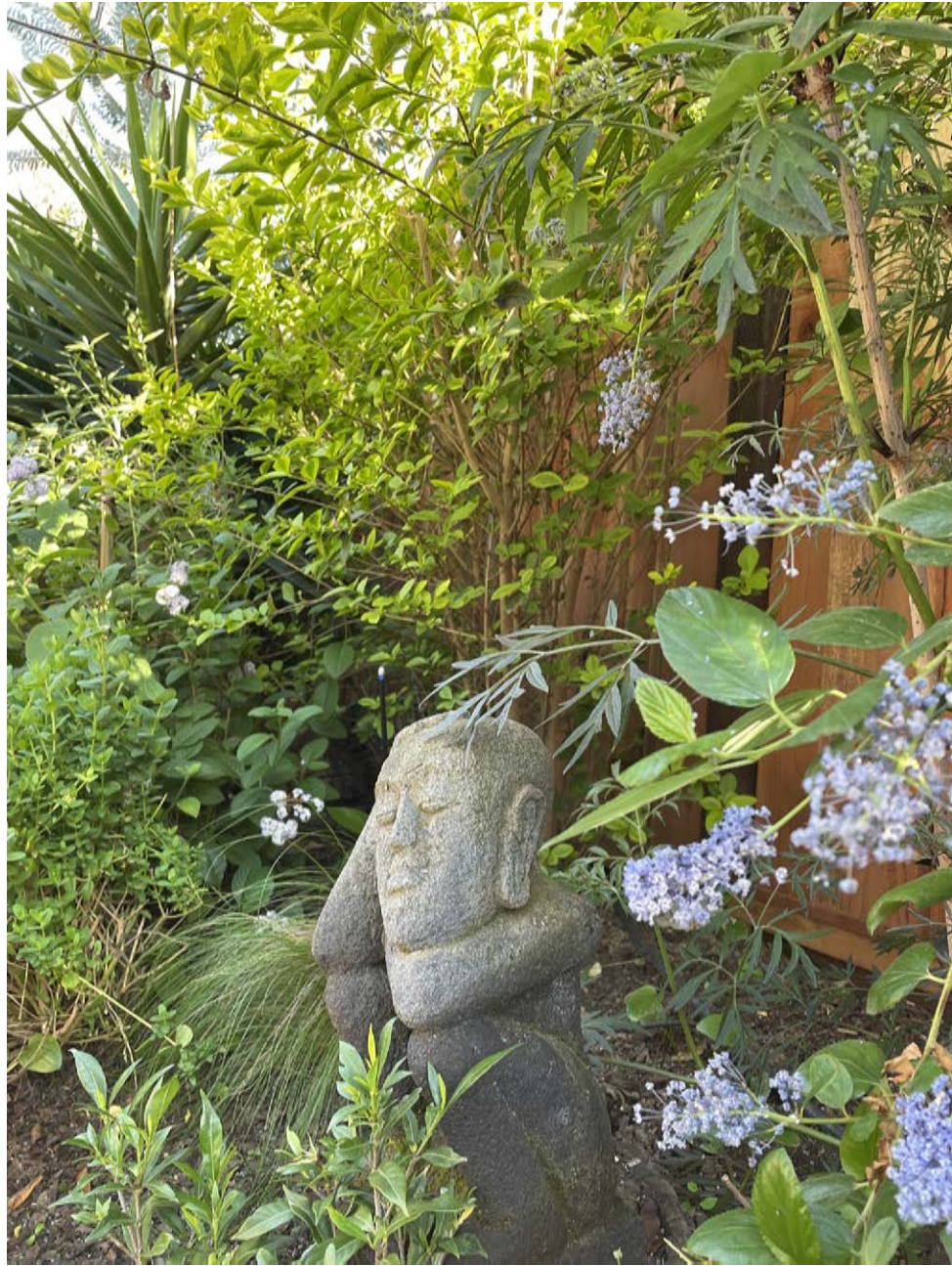
Lush 1200 ft² garden in Sunnyvale, CA. A family of six had a strong emphasis on play space for kids and outdoor dining. Soil rehabilitation and plant restoration was followed by collaborative planting. Small budget, quick results for renters.

Private client.

2020. Completed

WITHIN 8 MONTHS, a paved, concrete yard with lifeless soil became a lush, lively garden





GARDEN RESTORATION IN OAKLAND HILLS, CA

Restoration of 8,000 ft² tropically inspired garden designed in the 1990's and grown wild. Understory plants, paths and ground cover restored and revitalized. Outdoor amenities such as day bed, hot tub, outdoor office, decks and raised vegetable garden were redone.

Private client.

2020. Completed

Oakland Hills offers a **RARE MICRO CLIMATE** that enables a wide variety of plants. Considering shade areas, plants include tropic, desert and mediterranean climates.



YAD HARUTZIM 14, JERUSALEM CO-DESIGN IN AN INDUSTRIAL ZONE

Collaborative ideation and design process with business owners resulted in a street corner offering shade, water and beneficial botanics for passers-by. Talpiot is an arid, vehicle-scale industrial area transforming from small-scale production to a retail and office district, and public space is adapting.

Public engagement, design & management, with ONYA Collective, for Eden, Jerusalem Development Co. + Business Association + New Spirit Organization for Jerusalem Communities.

2017. Completed. \$120,000



SHADING STRUCTURE follows historic contour of full-grown tree. **CUSTOM SEATING** made of recycled pressed car tires, **WATER FOUNTAIN** and anti-vandal **MIRROR** for a small wash, and **BENEFICIAL PLANTS** like Sansevieria, Lime tree, and Aloe Vera, balance damage caused by air pollution and strong sun.





סמולת דירוגית



תחילת דסקים מאזין



תחבואות קצה



אקזיטשן



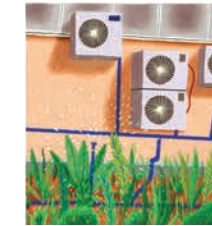
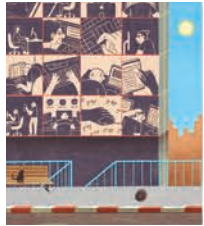
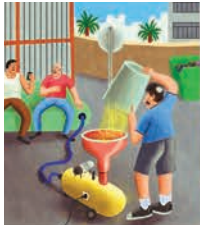
הספקה מאלגנט



אוויר קריר



אדמנים נשאים



PARTICIPATION WAS KEY TO THE GETTING IT RIGHT.
 30 business owners participated in personal interviews and round table brainstorming sessions. Each table discussed a subject rising from previous interviews and brainstormed ideas depicted in this illustration. Ideas were integrated in final design.
 Above: Before. Below: After.

מבני ענק בין שכונות מגורים

השטח הכולל של המבנים הוא כ-100,000 מ"ר. המבנים יבנו על גבי קרקע פרטית. המבנים יבנו על גבי קרקע פרטית. המבנים יבנו על גבי קרקע פרטית.



זה החזיק מנוטרט

שטח המבנים 11,200 מ"ר. שטח כל המבנים 99,999 מ"ר. זהו הכנסה של 142 קומות ובהן קומות מגורים או לא. המבנים יבנו על גבי קרקע פרטית.

מסדרונות חיצוניים

הגעה למסדרונות ובתוכם לפרויקט מחנות. אולם קראים אולם מסדרונות חיצוניים לילית. אולם חיצוניים בולטות או גודל. רחוק מקומות המגורים. אולם חיצוניים בולטות או גודל.

הזו נפל כך

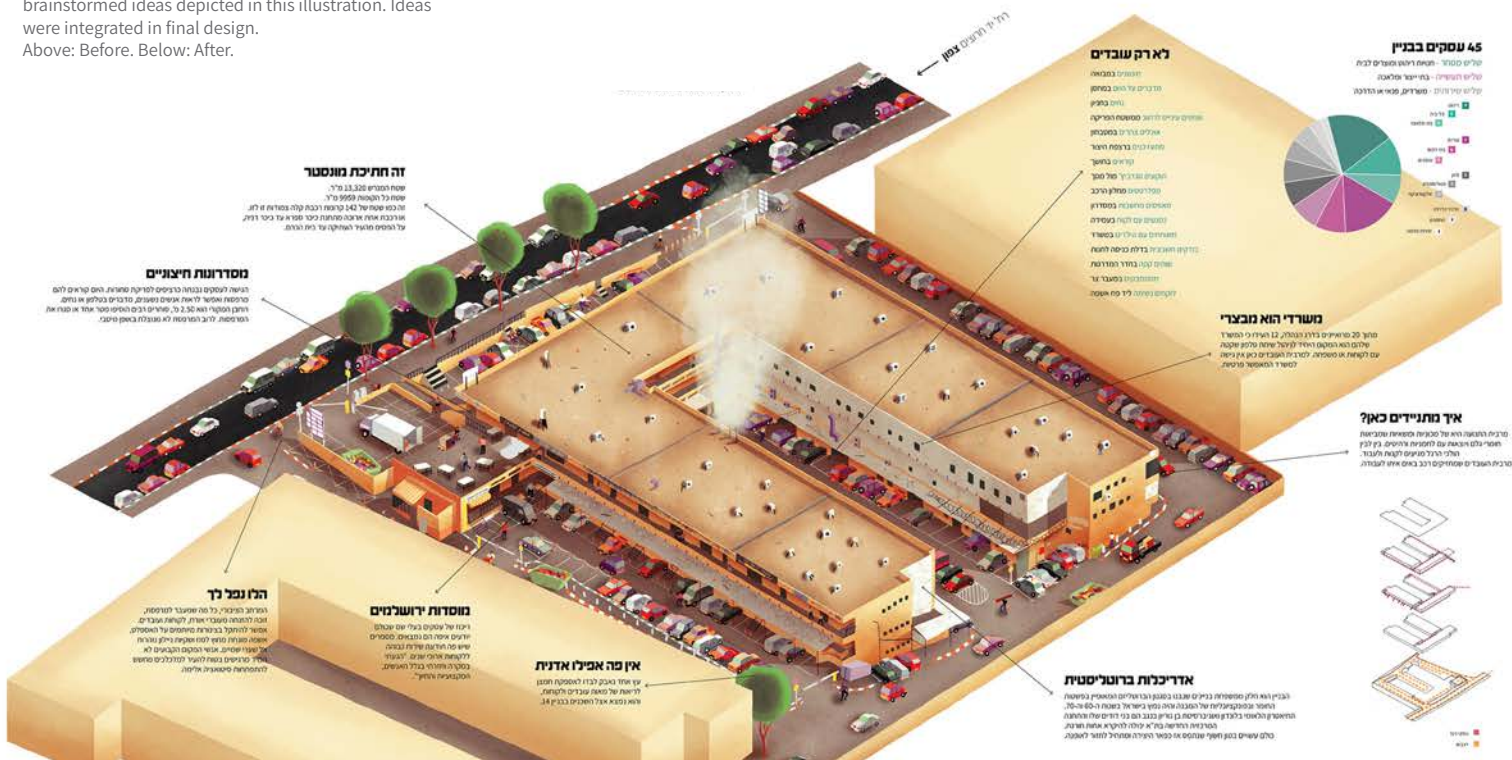
המבנים יבנו על גבי קרקע פרטית. המבנים יבנו על גבי קרקע פרטית. המבנים יבנו על גבי קרקע פרטית.

מוסדות ירושמיים

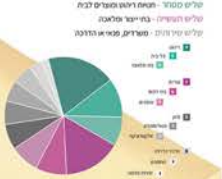
המבנים יבנו על גבי קרקע פרטית. המבנים יבנו על גבי קרקע פרטית. המבנים יבנו על גבי קרקע פרטית.

אן מה אפילו אדנית

המבנים יבנו על גבי קרקע פרטית. המבנים יבנו על גבי קרקע פרטית. המבנים יבנו על גבי קרקע פרטית.



45 עסקים בבניין



לארז עובדים

המבנים יבנו על גבי קרקע פרטית. המבנים יבנו על גבי קרקע פרטית. המבנים יבנו על גבי קרקע פרטית.

משרדי הא מבצר

המבנים יבנו על גבי קרקע פרטית. המבנים יבנו על גבי קרקע פרטית. המבנים יבנו על גבי קרקע פרטית.

אך חתניים כאן?

המבנים יבנו על גבי קרקע פרטית. המבנים יבנו על גבי קרקע פרטית. המבנים יבנו על גבי קרקע פרטית.

אדריכלות בחנונית

המבנים יבנו על גבי קרקע פרטית. המבנים יבנו על גבי קרקע פרטית. המבנים יבנו על גבי קרקע פרטית.

סדר יום

- 8:00 פתיחת לוח נכונת הירידה
- 7:00 פתיחת לוחות מנוחה ללוח המלחמה
- 6:00 פתרון עניינים, נקמה שחר ללב העבודה
- 5:00 אגף המעורר עם מנוחה מנוחה נוחה מחצות
- 4:00 קמח בעולם עם חום
- 3:30 פתיחת לוחות, תחילת לוחות המנוחה עם דיוקן
- 3:00 פתיחת לוחות, תחילת לוחות המנוחה עם דיוקן
- 2:30 פתיחת לוחות, תחילת לוחות המנוחה עם דיוקן
- 2:00 פתיחת לוחות, תחילת לוחות המנוחה עם דיוקן
- 1:30 פתיחת לוחות, תחילת לוחות המנוחה עם דיוקן
- 1:00 פתיחת לוחות, תחילת לוחות המנוחה עם דיוקן
- 0:00 פתיחת לוחות, תחילת לוחות המנוחה עם דיוקן

המבנים יבנו על גבי קרקע פרטית. המבנים יבנו על גבי קרקע פרטית. המבנים יבנו על גבי קרקע פרטית.



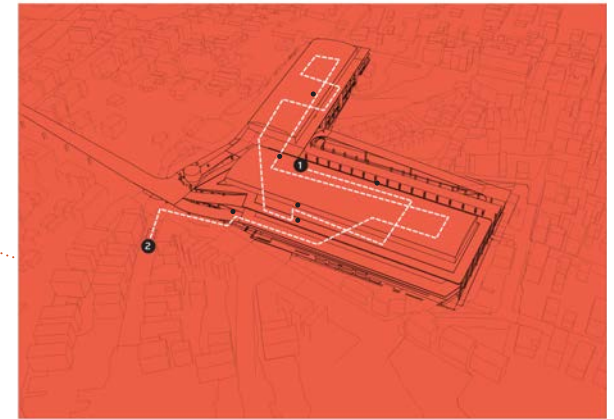
NEXT STATION - ECOLOGICAL INTERVENTIONS IN A BUS STATION

Series of interventions in and around Tel-Aviv-Yafo's monstrous central bus station, seeking to present innovative ways to connect cityscape and nature. Placemaking, urban farming, guerilla gardening and eco-artistic projects aimed to create public awareness to the ecological and social values in the building's untapped potential.

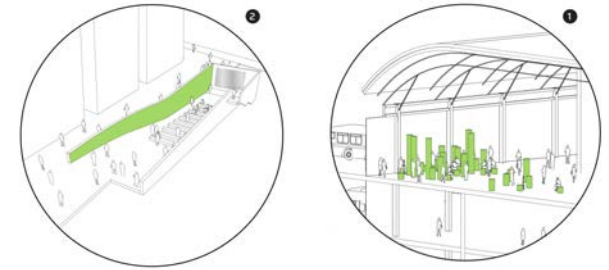
Curation, production and management with ONYA Collective and hundreds of volunteers, artists and sponsors. part of 'WorldWide Storefront' exhibition by Storefront for Art & Architecture, NYC

2014. completed . \$1,000 + sponsorships + alot of good will

1,500 people arrived to the opening event, and tens of thousands of commuters met the living installations over two months. 3 Major interventions still remain, maintained monthly by ONYA volunteers.



Top left to bottom right:
1 air purifying plants on bridge column
2 upcycled vertical mini-farm
3 free bus terminal library in 12 languages
4 green roof on retired bus
5 multi-community garden
6 hydroponic indoor farm
7 celebrating leaf harvest
8 vertical vegi-bench, built from scraps and reusing waste water



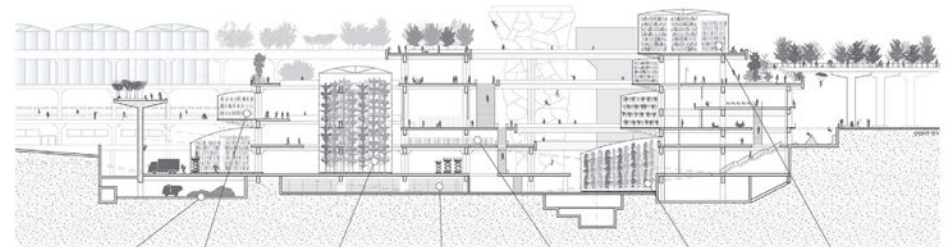
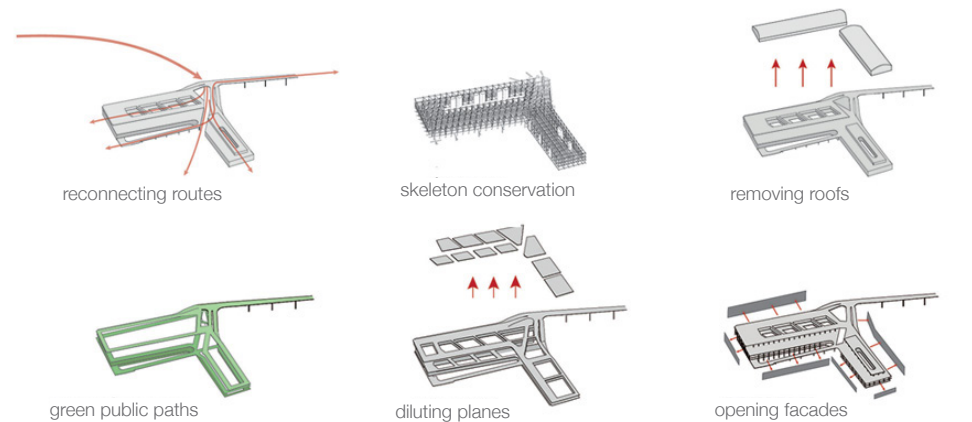
MIXED USE VERTICAL FARM IN TEL-AVIV-YAFO CENTRAL BUS STATION

Re-purposing Tel-Aviv-Yafo's mega central bus station, a notorious urban black hole, could perpetuate a metamorphosis process, leading to a clean hub of growth, empowering positive social relations in surrounding communities.

Final project in 'Complex Structures' studio, Bezalel Academy of Art and Design, Jerusalem, Dept. of Architecture.

2013. conceptual

- 240,000 m² over 8 floors
- cutting adjacent streets
- 55% deserted
- 70,000 commuters daily
- high pollution rates



GAMLA SCHOOL RE-USE INNOVATION AND CO-WORKING SPACE

Adaptive re-use of Gamla school into young innovation and co-working space. The Brutalist style structure is punctured by glass boxes, improving living conditions and celebrating public uses with adjacent pedestrian street

Conceptual and detailed planning.
Municipality of Katzrin

2015-2017. \$1,000,000

Bunker-like atmosphere was to be opened through a series of openings, in roof and facades, replaced by energy efficient shading and ventilation. Internal wall replaced by transparent sliding doors, enhancing sense of space and allowing natural light in. Central atrium turned into an indoor piazzetta.

Public demand for flexible spaces for resident endeavors met the opportunity to re-use an abandoned school. Short-term rent work spaces, pilates room, cafe, classrooms, treatment rooms and a youth center will share the building when it re-opens.



URBAN SHADE

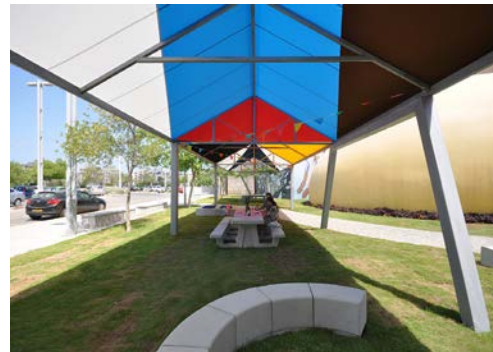
Winning prototype in an international competition for large scale shading structure. The design is a simple and happy take-off on available materials of steel and fabric, defining a useful space for people under the harsh mediterranean sun.

Local architect, with Point Supreme Architects, Greece
'Urban Shade' competition and exhibition, Holon Design Museum, Beracha Foundation, Holon municipality.

2015 . built, \$30,000

Old and new public parks and streets in Israel are planned without regard to the issue of shade. Socially disadvantaged are the ones to most suffer, forced to spend summer afternoons in poorly insulated small apartments or air conditioned shopping malls.

Jaffa slope park, inaugurated 2010



DATA CITY

Infographic interventions in public places, communicating practical urban ecology matters in a fun way.

Energy consumption, global comparison of trees per person and graphic recipes inviting foraging from accordingly planted parklets.

with ONYA Collective and Roni Levit
Graphic Design, part of 'Seed City' project for Ramat-Gan municipality.

2016. completed

Graphic recipes include:
COCKTAIL ingredients across from a local bar, **BUTTERFLY** attracting plants in front of a petrol station, shading strawberry trees and soothing aloe vera in a **SUNNY SPOT**, and **JAM** recipe not far from a well known bakery.



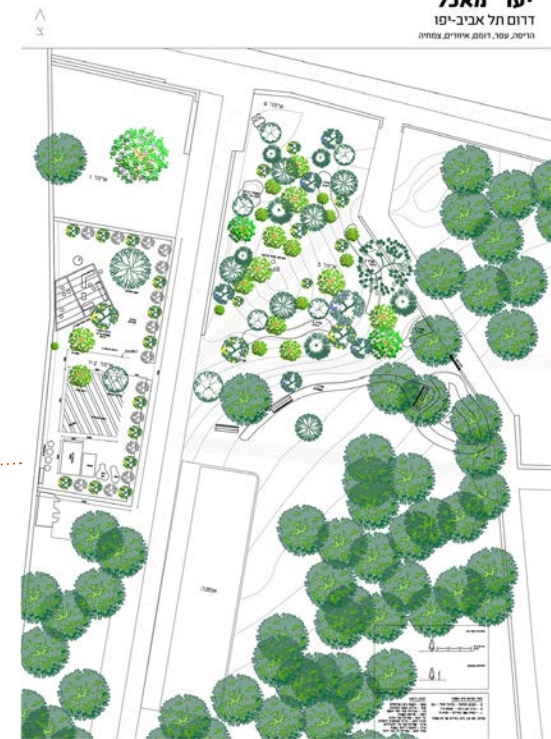
SOUTH TEL-AVIV COMMUNITY FOOD FOREST

Collaborative planning of a community-managed, low maintenance, water conserving agro-forestry system, fit for a Mediterranean climate zone.

Landscape architecture and co-design as community member.
with Green Trend (Megama Yeruka) organization for environmental activism, backed by Tel-Aviv-Yafo municipality.

2016-2018. planted and growing. volunteer project

30 people of all ages participated in planning exercises, deciding upon tree types, furniture and signage.



Local types of olives, citrus, figs, berries, pomegranades, sambuk, cacti, papayas and moringa trees will introduce climate compatible species in plant companionship setting. Currently, the park is planted with pines imported from Europe, detaching cultural relations and risking lives in case of wildfires.





MIGRATION GROVE ALBANY BULB, CA

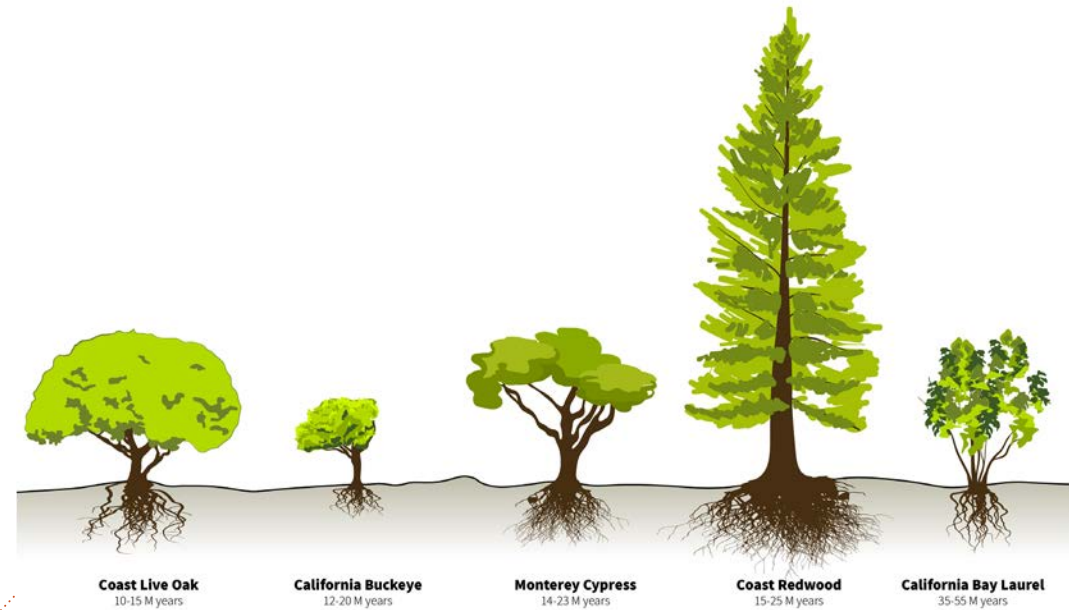
Where are you native to? Even trees we consider native migrated here in different times. With changing social and environmental climates, this grove of five California trees planted at Albany Bulb landfill art part, tells a story of a local habitat, in preparation for future natives.

Guerilla planting.

2019. Completed. Volunteer project.

Albany Bulb is a former construction waste landfill turned into informal public art park since dumping stopped in the 1980's.

The selected native trees provides food, shade and nesting space for a diversity of species including humans.



ALL AND EVERY GRASS SOCIAL ART IN THE SCIENCE MUSEUM

Multi-community garden and series of educational events, presenting 8 diverse communities in Jerusalem involved in sustainability. Like plant guilds, Palestinian gypsies, secular Israelis, Orthodox Jews and neo-hippy communities are seemingly separate and even conflicted above ground, but actually connected at the roots.

Part of Agropolis, artistic interventions in a scientific agriculture exhibition. Jerusalem Science Museum

2016. ongoing, \$7,000 and locally grown crops

Each community received one planter and plants with cultural importance, sharing its story and symbolism. Event content was built by the groups, thus creating discussion over what is common - nature and sustainability, rather than what is different - ethnic or political background.



WATER TOWERS, NEW PERSPECTIVES

cultural action calling for the re-purposing of water towers as public places, reviving their social and cultural centrality in Israel's modern history

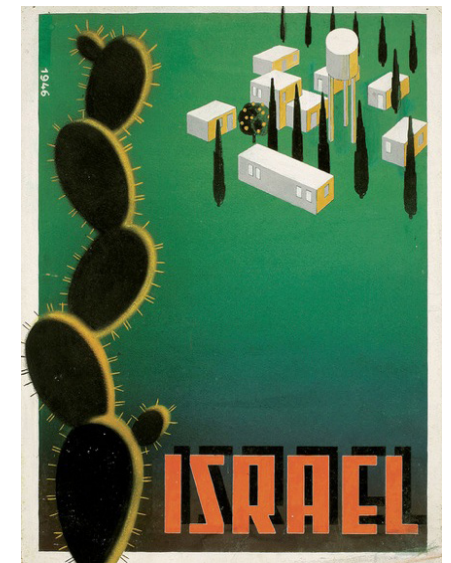
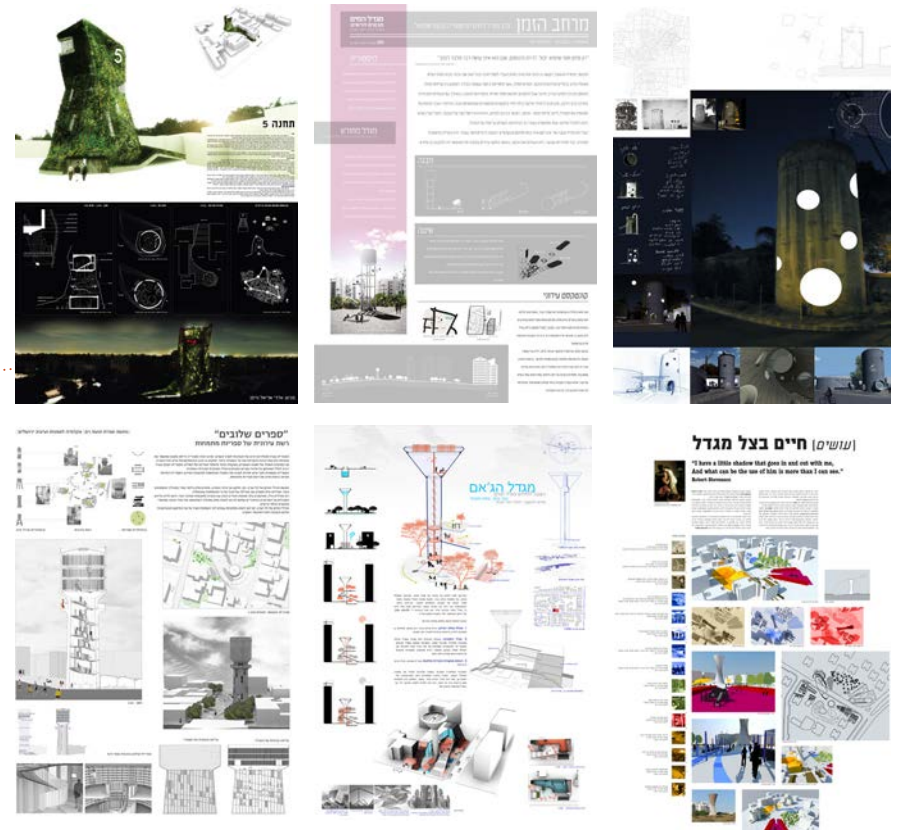
Concept, research, curation and production of nationwide architectural competition, academic conference, website & exhibition

Berkeley Prize design excellence endowment 2010, with Bezalel Academy of Art and Design, Society for preservation of Israel heritage sites, ICOMOS Israel and friends.

2010 . completed . \$25,000

Young architects were asked to submit of documentation file and proposals for public uses based on local community needs

3,500 exhibition visitors, television, radio and wide press coverage



Source: David Tartakover

לנצח לפתא את ליפתא SAVE LIFTA

Lifta was the largest Palestinian village in Jerusalem area until 1948. Today, it is the only standing remain of vernacular architectural heritage which hasn't been destroyed or modernized. Untouched, it is re-integrated with a rich and unique natural habitat. A rare coalition of Jews and Palestinians has formed, including former residents and their descendents. We are fighting approved plans to transform the village into a luxurious neighbourhood of private villas.

Coordinating and teaching 2-week workshop + a full semester course for Bezalel students, documenting the village in 3 aspects - people, buildings, environment.

workshops in 2012, 2014. 'Save Lifta' coalition activity ongoing.



360° imagery of Lifta has been taken and uploaded, expanding Google Street View into the village. The tour is open for everyone, including those who aren't allowed to return and visit their old homes.

LEFT a Lifta family before 1948
MIDDLE Lifta village, 1930's, taken from the Jaffa-Jerusalem road
RIGHT Jewish Orthodox kids loosening up in Lifta spring pool, 2012

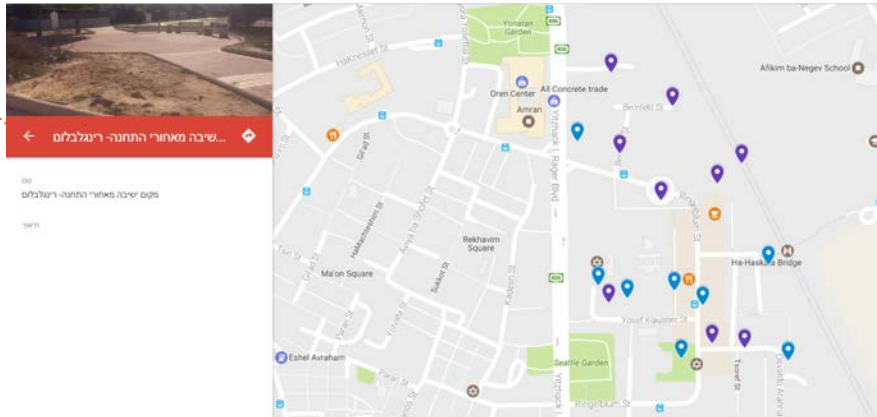


LANDSCAPE CO-DESIGN CONSULTING FOR URBAN ACTIVISTS

Consulting for local sustainability centers in peripheral towns in Israel, for landscape planning in reclaimed spaces with local communities. The process is based on four collaborative steps: Mapping, brainstorm, planning, building.

Heschel Sustainability Center's network of local sustainability centers. Activity in Gan Yavne, Beer Sheva, Kiryat Gat and Haifa.

2017. Completed



'Dalet district' in Beer Sheva is dotted with mis-used places and dark passages. This map shows potential intervention points, created by the community.



A group of community activists in Kiryat Gat, between 16 and 70 years old, have taken responsibility over this territory, which they hope will be a fruit orchard and a place to play and rest.



Gan Yavne's ecological farm developed an extension for 'Esther's Garden', a memorial trail with ponds, trees and a weather center, all based on mixed-age participant ideas.

